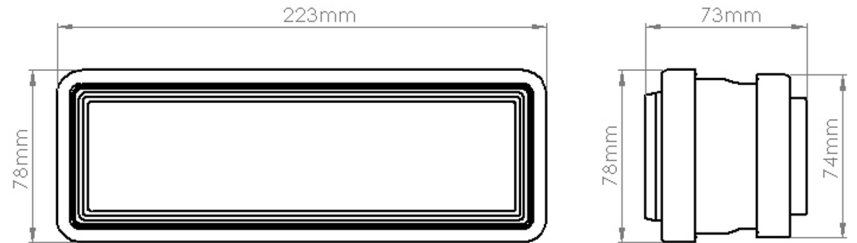
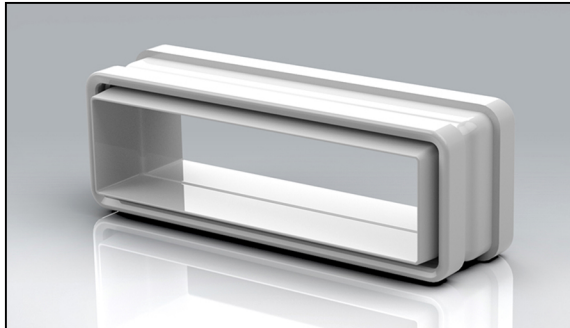


PRODUCT DATA SHEET

VSSC204DF

Rapid Self-Seal 204x60mm Duct to Fitting Coupling



MANUFACTURER:	VERPLAS LTD
PART NUMBER:	VSSC204DF
SIZE:	204x60mm
FOR USE WITH:	VERPLAS SYSTEM 204
BOX QUANTITY:	70
INDIVIDUAL WEIGHT:	210g
COLOUR:	White
MIN OPERATING TEMP	-15°C
MAX OPERATING TEMP	+60°C

SPECIFICATION DETAILS

The VSSC204DF 204x60mm Rectangular Rapid Self-Seal Coupling Duct to Fitting is manufactured from (white) High Impact Polystyrene and has a minimum free area of 9,750mm² (Duct Side) to 10,832mm² (Fitting Side). The VSSC204DF incorporates a gasket to reduce air leakage to an absolute minimum in connections between the System 204 ducting and System 204 fittings.

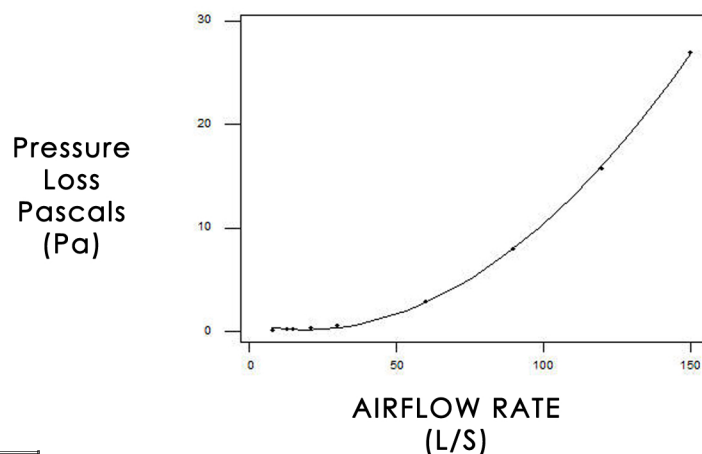
The VSSC204DF is fully compliant with SAP Appendix Q Product Characteristics Database recommendations for duct sizes used with both extract and Mechanical Heat Recovery Systems.

VSSC204DF is manufactured in compliance with Domestic Plastic Ductwork Specification DW/154 and does meet UL94HB flammability standard.

VSSC204DF has been designed for use with Verplas System 204.

AIRFLOW	RESISTANCE
8 l/s	0.08 pa
13 l/s	0.18 pa
21 l/s	0.40 pa
30 l/s	0.60 pa
60 l/s	2.95 pa
120 l/s	15.70 pa

PERFORMANCE CURVE



Associated Ancillaries

VSSC5605
204X60mm Rapid Self-Seal
90° Horizontal Bend

VSSC204DD
204x60mm Duct to
Duct Connector

VKC5629
204x60mm
2m Flat Channel



Scan Here
to find out
how Rapid
it really is!

