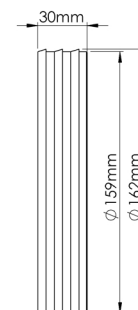
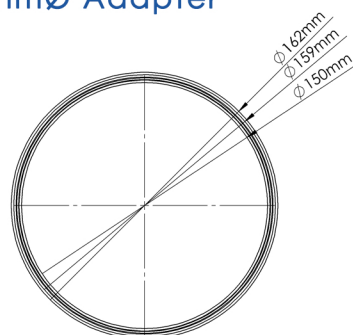


PRODUCT DATA SHEET

SST-160-ADAPTER

Rapid Self-Seal Thermal 160mmØ to 150mmØ Adapter



MANUFACTURER:	VERPLAS LTD
PART NUMBER:	SST-160-ADAPTER
SIZE:	160mmØ
FOR USE WITH:	VERPLAS THERMAL 160
BOX QUANTITY:	1
INDIVIDUAL WEIGHT:	42g
COLOUR	White
MIN OPERATING TEMP	-15°C
MAX OPERATING TEMP	+60°C
THERMAL RESISTANCE	N/A
THERMAL CONDUCTIVITY	N/A

SPECIFICATION DETAILS

The SST-160-ADAPTER can be used to connect the SST-160 Thermal Duct onto a 150mm Fan Spigot or with the use of a Straight Connector VKC365, can connect System 160 Thermal Duct to conventional System 150 Round Plastic Ducting.

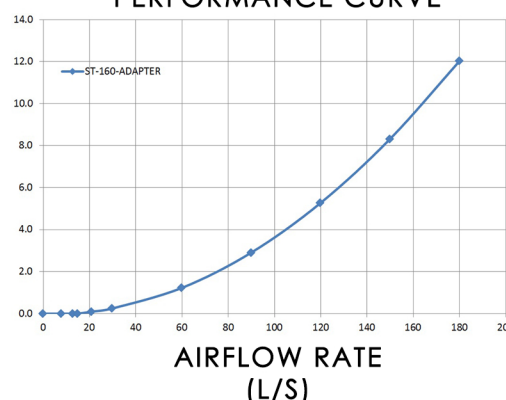
The SST-160-ADAPTER is manufactured from prime High Impact Polystyrene and has a minimum free area of 17,577mm².

AIRFLOW RESISTANCE

8 l/s	0.00 pa
13 l/s	0.00 pa
21 l/s	0.10 pa
30 l/s	0.30 pa
60 l/s	1.20 pa
120 l/s	5.30 pa

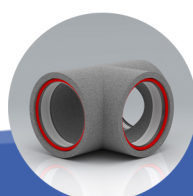
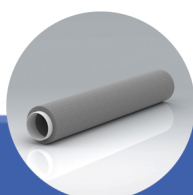
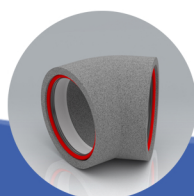
PERFORMANCE CURVE

Pressure
Loss
Pascals
(Pa)



Associated Ancillaries

- SST-160-45B-IND
160mmØ 45° Round Rapid Thermal Self-Seal Bend
- SST-160-1M-IND
160mmØ Rapid Thermal Self-Seal 1m Pipe
- SST-160-90B-IND
160mmØ Rapid Self-Seal Thermal T-Piece



Scan Here
to find out
how quick
it is to install

